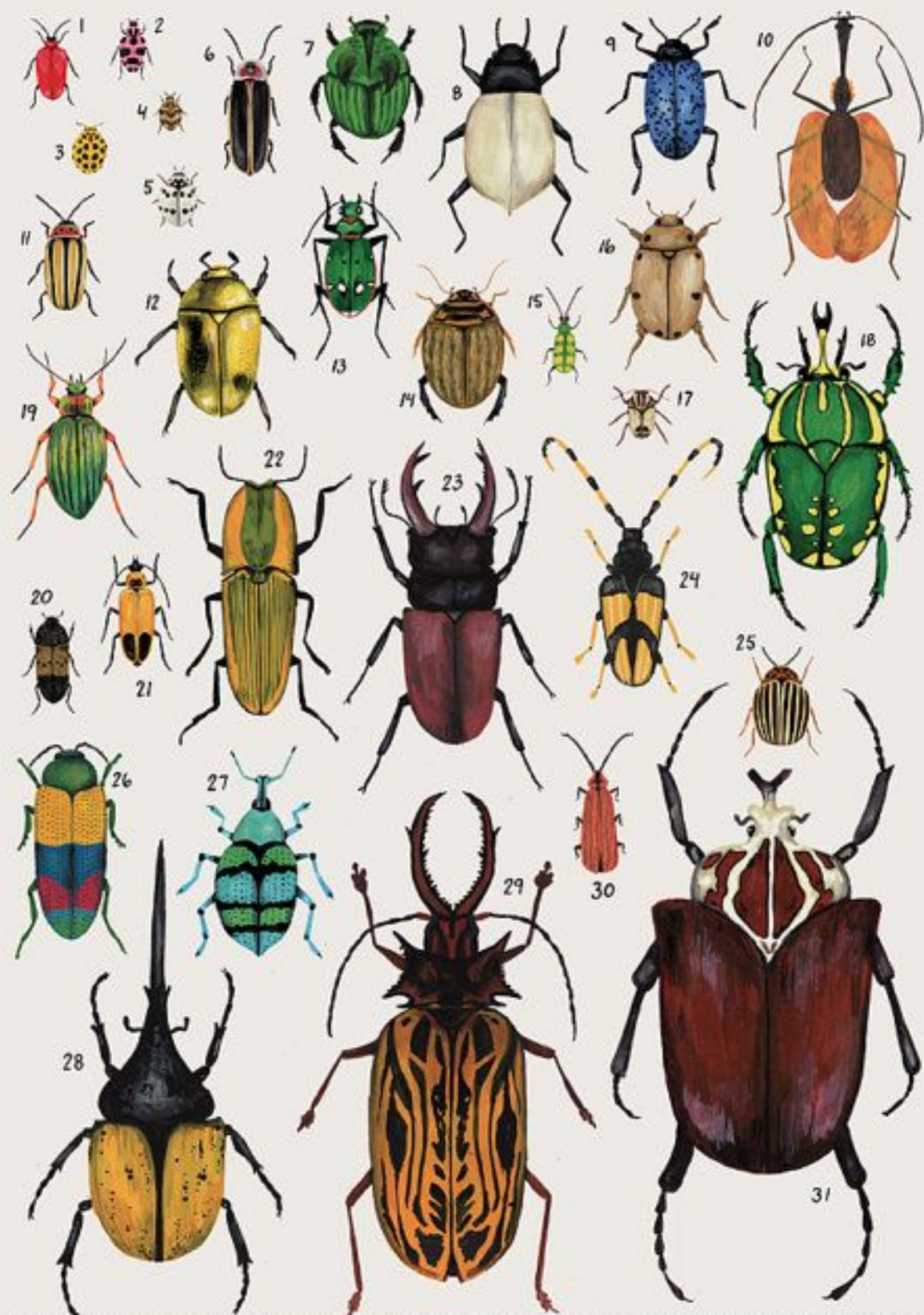


CREATURES OF THE ORDER COLEOPTERA



1. SCARLET LINY BEETLE 2. PINK SPOTTED LADY BEETLE 3. TWENTY-TWO SPOT LADYBIRD 4. VARIED CARPET BEETLE 5. ASHY GRAY LADY BEETLE 6. PHOTURIS LUCIFERENS 7. PHANAEUS DEMON 8. DUNBARICUS CANDIDIPENNIS 9. BLUE FUNGUS BITTLE 10. VIOLIN BEETLE 11. STRIPED WILLOW LEAF BEETLE 12. GOLDEN SCARAB BEETLE 13. GREEN TIGER BEETLE 14. ACHILUS SULCATUS 15. BANNED CUCUMBER BEETLE 16. GRAPEVINE BEETLE 17. CRYPTOCEPHALUS PSEUDOMACULUS 18. MECYNORHINA POLYPHEMUS 19. GOLDEN GROUND BEETLE 20. LARDER BEETLE 21. GOLDENROD SOLDIER BEETLE 22. CMBUCOPHANT LUNARIUS 23. STAG BEETLE 24. HORSE-BRAN LONGHORN BEETLE 25. COLORADO POTATO BEETLE 26. TEMOGNATHA ALTERNATA 27. EUPHOLUS SCHWENHERRI 28. HERCULES BEETLE 29. MACRODONTIA CIRVICORNIS 30. RED SHOULDER LYCID BEETLE 31. GOLIATH BEETLE